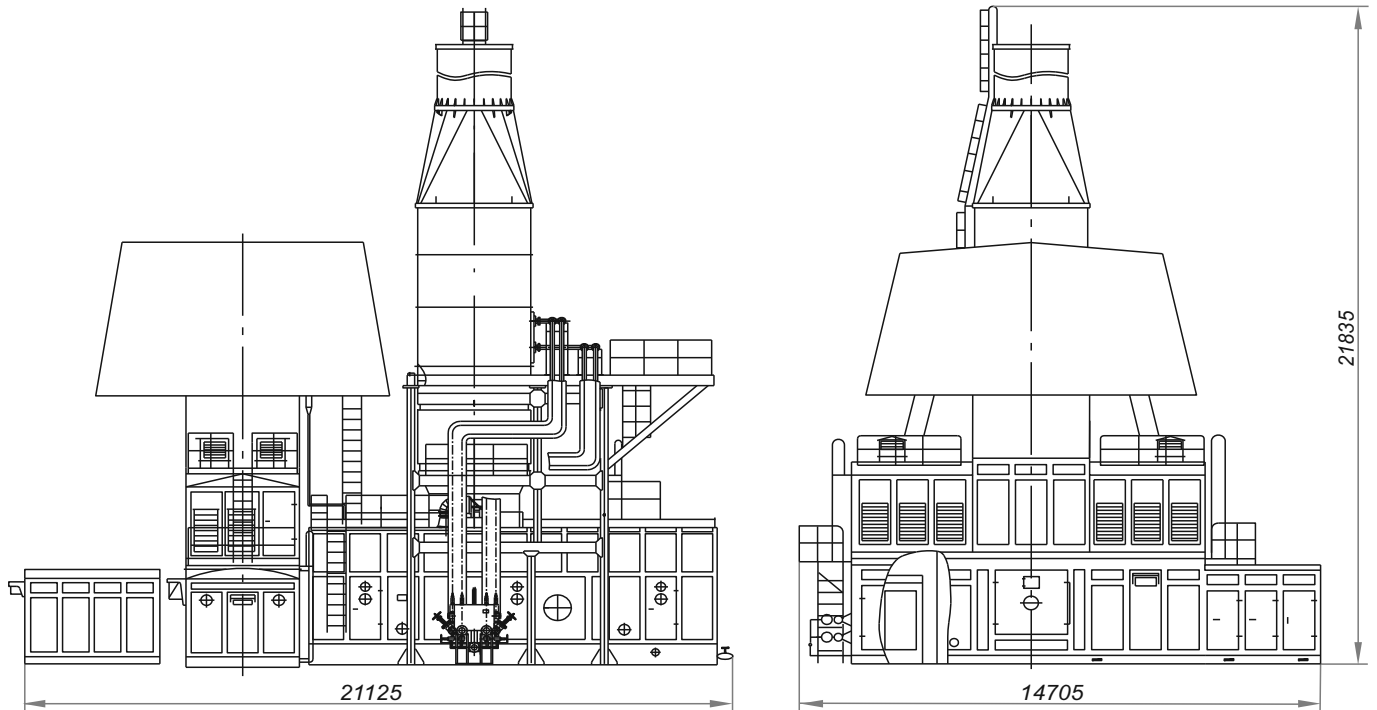
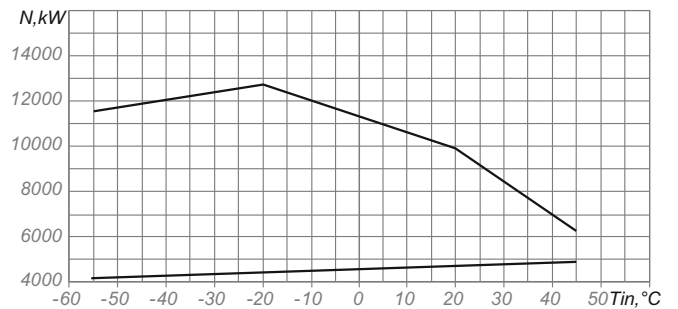


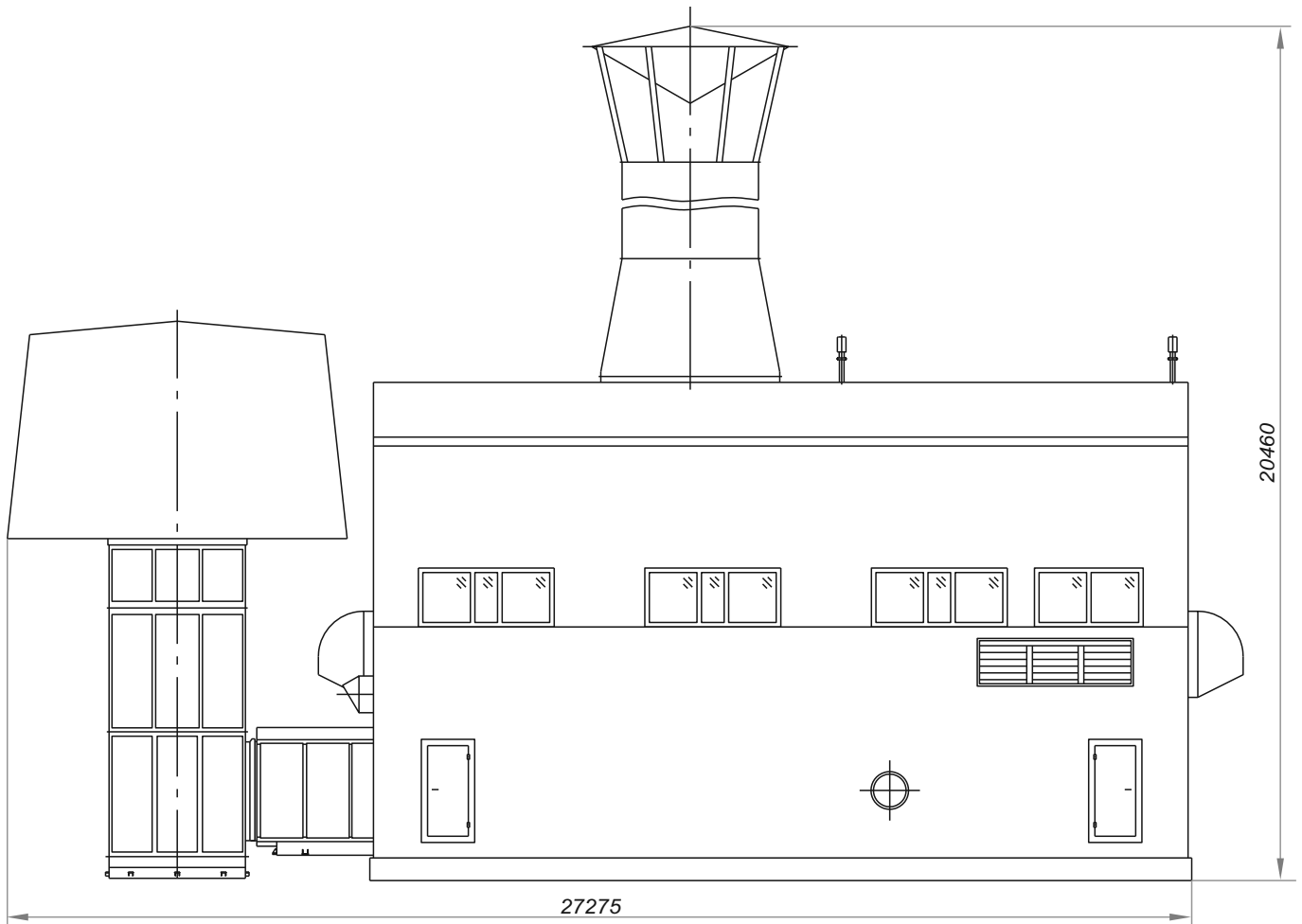
# 19 Gas Pumping Unit GPA-C-10B/56-1.44



Technical parameters		
Climatic modification		«U.1»
Flow rate capacity	MMCMD	17.3
Suction pressure	kgf/cm <sup>2</sup>	38.0
Discharge pressure	kgf/cm <sup>2</sup>	56.0
Pressure ratio, design		1.44
Engine type	Gas-turbine NK-14ST-10	
Nominal capacity at engine's coupling (under stationary conditions)	MW	10.0
Nominal rotation speed of power turbine rotor of the engine	rpm	8200
Efficiency (under stationary conditions)	%	32
Compressor type	201GC2-290/39-56	
Unit weight (dry) in the scope of supply, max	kg	198000

Capacity limitations of NK-14ST-10  
depending on air temperature  
at the engine's inlet





Technical parameters		
Climatic modification:		
for indoors equipment		«UHL.4»
for outdoors equipment		«UHL.1»
Flow rate capacity	MMCMD	17.0
Suction pressure	kgf/cm <sup>2</sup>	38.0
Discharge pressure	kgf/cm <sup>2</sup>	56.0
Pressure ratio, design		1.44
Engine type	Gas-turbine NK-14ST-10	
Nominal capacity at engine's coupling (under stationary conditions)	MW	10.0
Nominal rotation speed of power turbine rotor of the engine	rpm	8200
Efficiency (under stationary conditions)	%	32
Compressor type	222GC2-290/39-56	
Unit weight (dry) in the scope of supply, max	kg	153000

Capacity limitations of NK-14ST-10  
depending on air temperature  
at the engine's inlet

